

**SURGE CONTROL PRODUCT & SOLUTIONS**

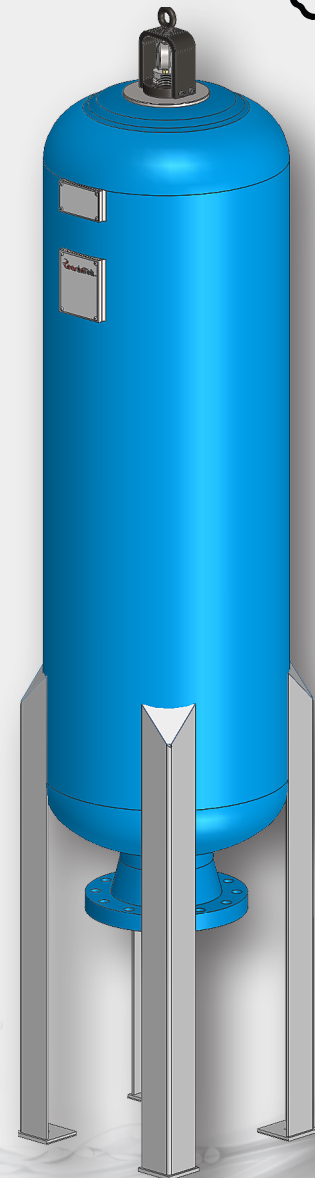
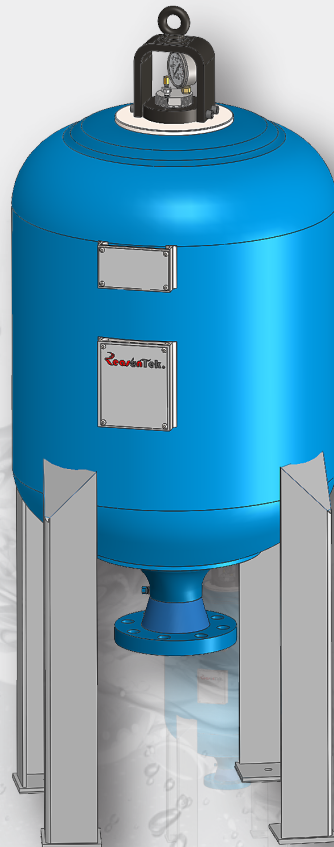
*ASME Vessel Made in USA*

# Low Pressure Accumulators Surge Suppressors

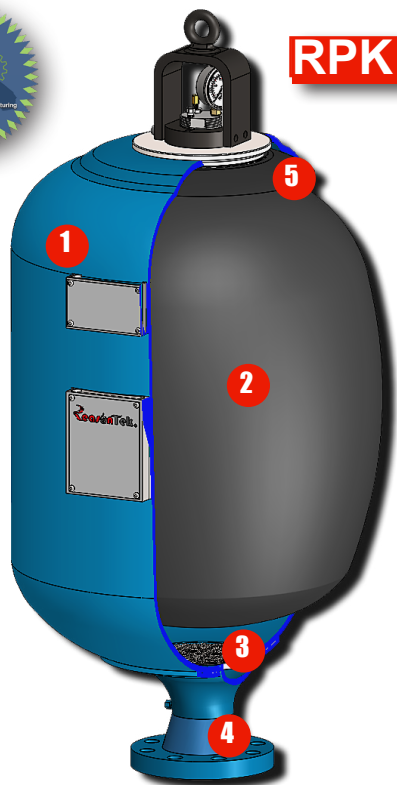


- GENERAL OIL SERVICE
- WATER & CHEMICAL SERVICE
- SLURRY SERVICE
- FIRE PROTECTION SERVICE

ASME 250/500 PSI  
40 GAL (150 L) to 150 GAL (575 L)



**PULSEKUSHON**<sup>™</sup>



**RPK**

**RPK Series Surge Suppressor, PULSEKUSHON™**

**SPECIFICATIONS:**

**Certification**

Standard ASME( Section VIII, Div.1), NB Registered, U Stamp, D.F: 4 to 1

**Pressure Ratings**

RPK Series: up to 500 PSI. The pressure rating is based on the ASME certification code with 4: 1 design factors.

**Sizes**

RPK Series: from 40 Gal. (150 L) to 150 Gal. (575 L)

**Maximum Flow Rates**

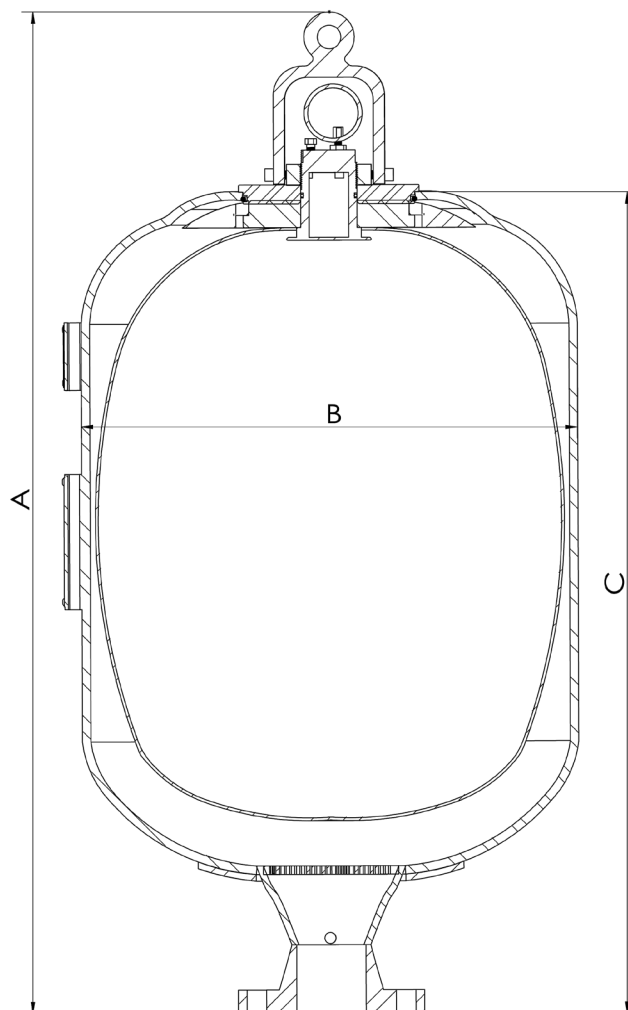
Flange Size	Max. Recommended Flow	
	GPM	LPM
3"	350	1325
4" & 6"	1000	3785
8" & 10"	1400	5300

**CONSTRUCTION:**

- ❶ **The Shell (RPK Welded)** is fabricated from carbon steel or stainless steel per ASME standard (Section VIII, Div. 1).
- ❷ **The Bladder** is made by the various high quality rubber compounds including Nitrile, Low Temp. Nitrile, High Temp Nitrile, Butyl, Viton/FKM, Hydrin, EPDM for different fluid media application. See the details on the Bladder Repair Kits section.
- ❸ **The Anti-extrusion Screen** is made by stainless steel material to prevent the bladder extrusion and for best corrosion resistance.
- ❹ **The Port Flange** is standard ANSI *RFWN* flanges per ANSI *B16.5* standard type for the best pipeline solutions.
- ❺ **The Anti-extrusion Ring (RPK)** is designed to prevent the bladder extrusion from the gas side when operated as top repairable type. Various rubber materials are available with stainless steel metal ring.

**DIMENSIONS:**

Nominal Size Gal. (L)	B Inch (mm)	Flange Size	ANSI 3"-300# Flange				Est. Weight	
			A		C		lbs	(Kg)
			Inch	(mm)	Inch	(mm)		
40 (150)	22.00 (559)	3"	46.00	(1168)	38.00	(965)	352	(158)
53 (200)		3"	48.39	(1229)	40.39	(1026)	467	(210)
73 (275)		3"	58.66	(1490)	50.66	(1287)	590	(266)
80 (300)		3"	67.00	(1702)	59.00	(1499)	646	(291)
100 (375)		3"	87.49	(2222)	79.49	(2019)	872	(392)
125 (475)		3"	98.55	(2503)	90.55	(2300)	1002	(451)
140 (530)		3"	106.16	(2696)	98.16	(2493)	1093	(492)
150 (575)		3"	114.96	(2920)	106.96	(2717)	1198	(539)



Check the catalog for more dimensions

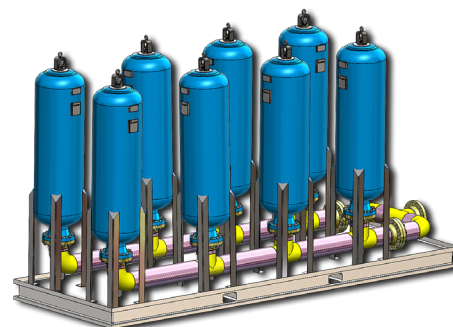
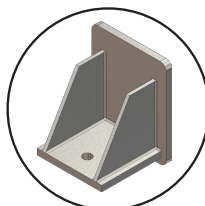
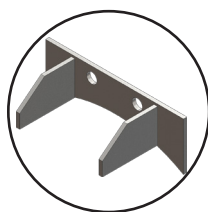
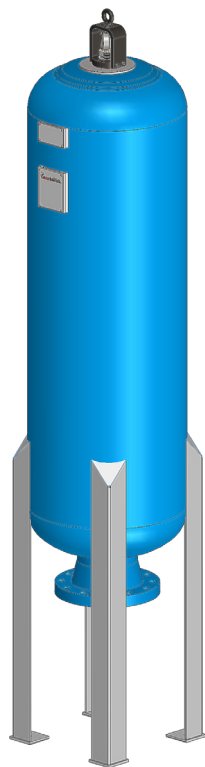
## RPK Series Custom Mounting Solutions

Custom mounting solutions are available by the approved drawings including supporting legs, supporting lugs, etc. For the group surge suppressor application, pipeline manifold and skid are available by request.

### Services & Coating

**Standard**-protective lubrication interior and primer paint exterior on carbon steel shells for oil services or stainless steel shells with no paint.

**Epoxy Coating Interior and Exterior**-Epoxy NSF-61, 10-12 MILS for water and chemical services. Other custom coating requirements are available by request.



1

2

3

4

5

6

7

8

Series	Size	Shell Matl.	Bladder/Seal Matl.	Flange	Service	Cert.	Mounting
RPK	40	C	01	F1	W	-	-

1	Series
Low Pressure Accumulator	RPK

2	Nominal Size
40 Gallon/150 Liter	40
53 Gallon/200 Liter	53
73 Gallon/275 Liter	73
80 Gallon/300 Liter	80
100 Gallon/375 Liter	100
125 Gallon/475 Liter	125
140 Gallon/530 Liter	140
150 Gallon/575 Liter	150
Others	XXX

3	Shell Material
Carbon Steel	C
Stainless Steel 316	S

8	Mounting
Supporting Legs	M1
Supporting Lugs	M2
Legs & Lugs	M3
Manifold Skid	MS

4	Bladder/Seal Material
Nitrile/Buna-N, Std.	01
Low Temp. Nitrile	02
High Temp. Nitrile	03
Hydrogenated Nitrile	04
Hydrin	05
EPDM	06
Butyl	07
Viton/FKM	08
Others	09
<i>(see Bladder Repair Kits section for details)</i>	

6	Service
Std. Lube Oil	-
Epoxy Interior/Exterior <i>(see Coating &amp; Service section for details)</i>	W
Others	X

5	Flange
2"-150#	E1
2"-300#	E2
3"-150#	F1
3"-300#	F2
4"-150#	P1
4"-300#	P2
6"-150#	T1
6"-300#	T2
8"-150#	N1
8"-300#	N2
10"-150#	S1
10"-300#	S2
Others	FX

7	Certificate
Standard ASME	-
Non-ASME	X

**example:** RAL-05C-01F1 is standard ASME 5-gallon surge suppressor with 3"-150# connection.

*Not all the materials are in stock. Some special materials and designs may have long lead time with no cancellation, or return. Check our customer service for the availability.*

## Why Use Surge Suppressors?

In high volume fluid handling systems, shocks are experienced when the valves open or close, or when the pumps are started or stopped. The pressure spikes generated are four times greater than the system allowable pressure, causing the burst of the pipe, loosening fittings and damaging the meters and instruments.

PULSEKUSHON™ is designed as low-pressure accumulator products to control these shocks. Application include water sprinkling systems, water handling systems, refinery, refueling systems, chemical processing systems.

## Surge Suppressor Benefits:

- Controls surges and water hammer
- Protects the meters and fittings, helps save the cost of repair or damage
- Saves pump energy by holding consistent pressure
- Keeps the system running smoothly and efficiently



*Reasontek Corporation*

565 W. Lambert Rd. #D, Brea, CA 92821 USA | [www.accumulators.reasontek.com](http://www.accumulators.reasontek.com)  
[sales@reasontek.com](mailto:sales@reasontek.com) | p: 323-800-6566 | f: 714-592-7723